

# Multifinger Imager Processing System (MIPS)

## Product range

**MIPSPro:** Fully configured interactive processing package for multi-arm mechanical calipers and auxiliary wireline logs.

**MIPSView:** License free viewer for end user interpretation. Enables delivery of reports in digital and web based formats.

**MIPSLite:** Field processing package with customized input and basic processing.

**MIPS3D:** Fully interactive 3D pipe viewer for interpretation.

## Platform

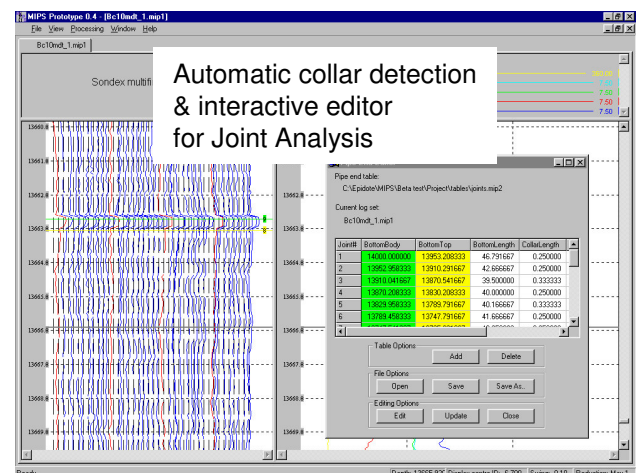
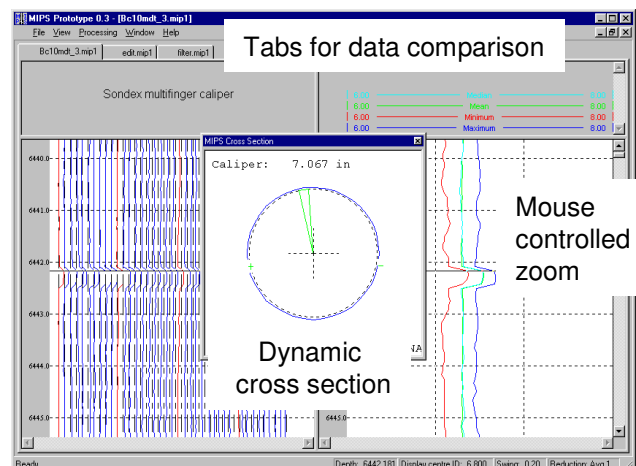
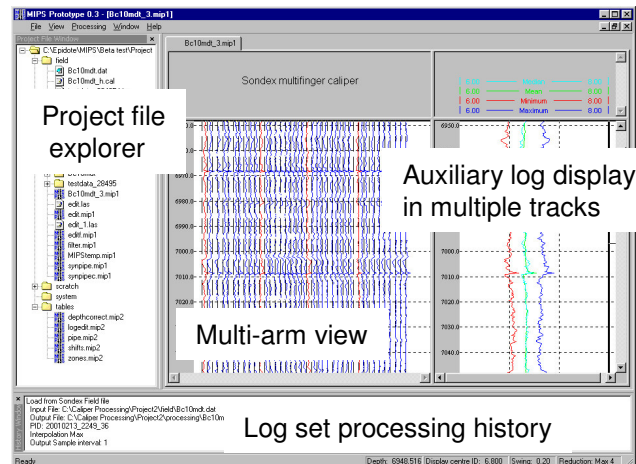
MIPS runs on a PC platform under Windows XP or Windows Vista. Minimum CPU 266Mhz Pentium with 64MB RAM.

Graphics are written to leverage OpenGL compatible graphics cards.

## Support

All MIPS packages are fully documented with interactive help. A PDF format copy of the full documentation is supplied.

Product support provided via email and ftp. Training and consultancy is also available.



# MIPSPro - Technical specifications

## Data Import

- Sondex SRO and MDT field data
- Warrior database curves
- LAS 2.0 ASCII files
- MS Excel \*.csv files
- Customized formats

## Data Processing

- Raw log editing
- Multi-arm filtering
- Re-sample in depth
- Shift, stretch & squeeze depth correction
- Merge of runs and additional logs
- Least squares centralization
- Data derived re-calibration
- Multi-arm statistics
- Azimuth driven orientation to upside
- Thickness and Time-lapse utilities

## Data Export

- LAS 2.0 ASCII files
- MIPS Binary format
- Customized formats

## Pipe Analysis

- Automatic pipe end detection & interactive edit
- Pipe-by-pipe penetration analysis
- Output analysis tables in MS Excel \*.csv format

## Viewing facilities (MIPS and MIPSView)

- Intelligent reduction of data for display
- Display of logs with various line types, weighting and shading
- Linked multi-window displays
- Dynamic cross section displays
- Display of additional imported logs (e.g. GR, CCL, Temp)
- Save of layout configurations
- Processing history display
- Explorer style file selection
- Synchronisation with MIPS3D
- Co-rendering of thickness / time-lapse logs

## Graphical Export

- JPEG & BMP
- AVI movies (MIPS3D)

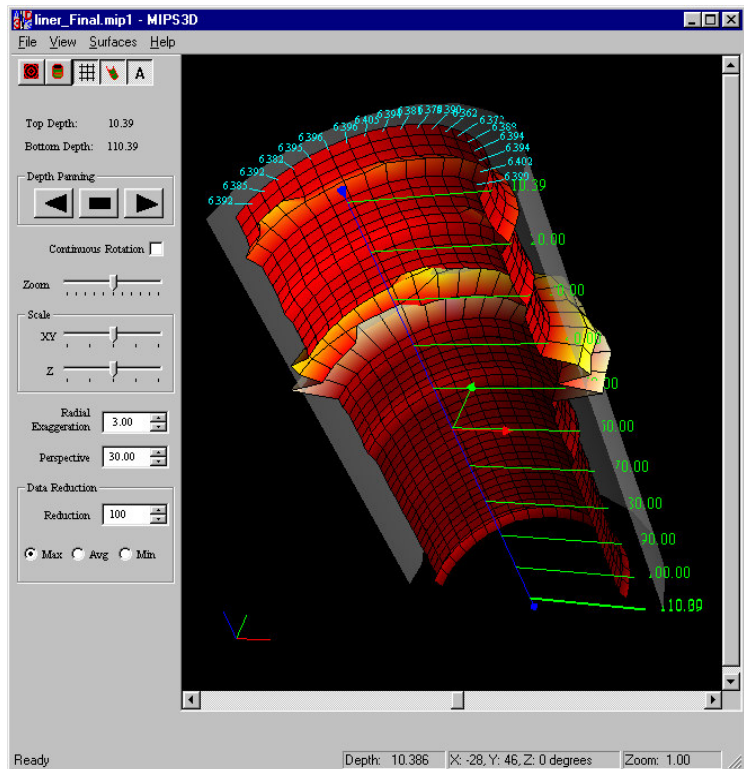
## MIPS3D

**MIPS3D** allows the engineer to view the inside surface of the pipe, either from the outside or in 'fly-down' mode.

3D animation and depth scrolling can be recorded as AVI format movies.

There are several different surface rendering and data reduction options.

The view can be synchronized with the display in MIPSView.



*Thigma Consulting*

www.thigma.com

info@thigma.com